

# SurePassExams



- ✓ Online Tool, Convenient, easy to study.
- ✓ Instant Online Access
- ✓ Supports All Web Browsers
- ✓ Practice Online Anytime
- ✓ Test History and Performance Review
- ✓ Supports Windows / Mac / Android / iOS, etc.



- ✓ Installable Software Application
- ✓ Simulates Real Exam Environment
- ✓ Builds Exam Confidence
- ✓ Supports MS Operating System
- ✓ Two Modes For Practice
- ✓ Practice Offline Anytime



- ✓ Printable PDF Format
- ✓ Prepared by IT Experts
- ✓ Instant Access to Download
- ✓ Study Anywhere, Anytime
- ✓ 365 Days Free Updates
- ✓ Free PDF Demo Available



## Security & Privacy

We respect customer privacy. We use McAfee's security service to provide you with utmost security for your personal information & peace of mind.



## 365 Days Free Updates

Free update is available within 365 days after your purchase. After 365 days, you will get 50% discounts for updating.



## Money Back Guarantee

Full refund if you fail the corresponding exam in 90 days after purchasing. And Free get any another product.



## Instant Download

After Payment, our system will send you the products you purchase in mailbox in a minute after payment. If not received within 2 hours, please contact us.

<http://www.surepassexams.com/>

Legal & authoritative company offering the highest pass-rate Exam Torrent materials and helping use pass for sure.

**Exam :** HP0-S28

**Title :** Intergrating & Managing HP Blade System Solutions in Enterprise

**Vendors :** HP

**Version :** DEMO

1.Which HP offering helps IT staff to use their systems more efficiently, resulting in a higher return on IT investments?

- A. Education Services
- B. OpenView Storage Mirroring
- C. Customer Self Repair
- D. SupportPlus Services

**Answer: A**

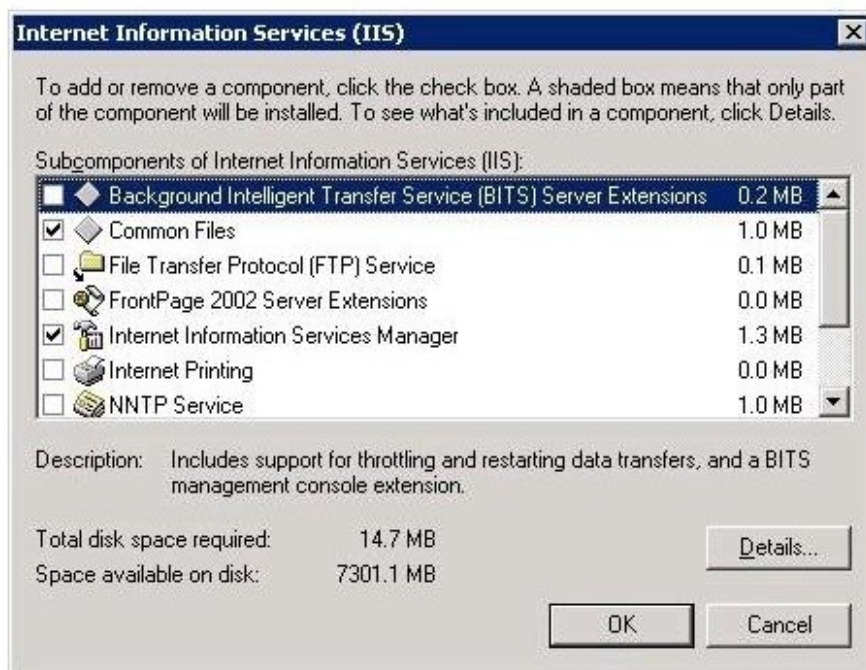
2.You want to receive an email notification if a blade in a particular enclosure has a hardware failure. Where do you navigate in HP SIM to accomplish this.?

- A. Tasks > Alerts > Paging
- B. User > Event Notification > Email
- C. Options > Events > Automatic Event Handling
- D. Options > User Notifications > Email Distributor

**Answer: C**

3.Click the Task button. Click on the Windows option that allows a system administrator to install HP Insight Control on a Windows server that will be used to deploy Linux servers

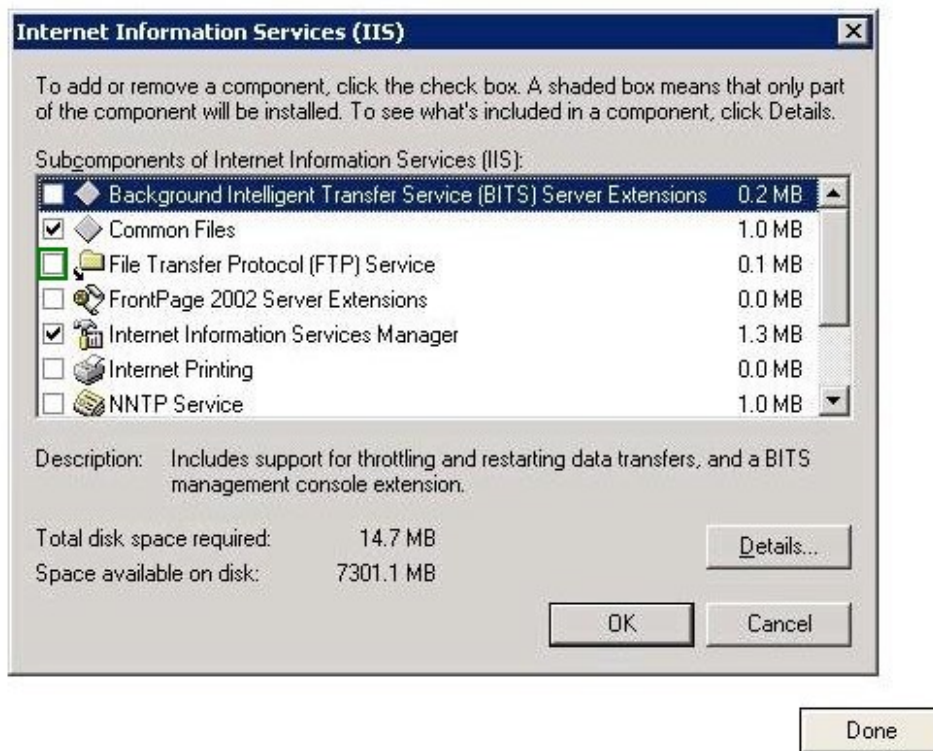
**Click on the Windows option that allows a system administrator to install HP Insight control on a Windows server that will be used to deploy Linux servers.**



Done

**Answer:**

Click on the Windows option that allows a system administrator to install HP Insight control on a Windows server that will be used to deploy Linux servers.



4. Which statement is true about managing ESX hosts that are controlled by a second Virtual Center server?

- A. Each Virtual Center server needs an extra license for HP SIM.
- B. Insight Control must be version 6.0 or greater.
- C. The total number of virtual machines managed by a Virtual Center server must not exceed 200.
- D. Virtual Center servers managed by one SIM server need to be on the same subnet.

**Answer: B**

5. Which software components must be installed before you can install HP Insight Control? (Select two.)

- A. Application Server Console
- B. Microsoft iSCSI Initiator
- C. Certificate Services
- D. Internet Information Services
- E. Email Services

**Answer: BD**

6. What must be done to keep previous user credentials when upgrading an HP Systems Insight Manager Central Management Server (CMS) from version 3.0 to a current version?

- A. Use the CMS Import Utility.
- B. Use the Database Converter Tool.
- C. Use the CMS Migration Tool.

D. Use the Database Upgrade Utility.

**Answer: C**

7. When configuring Virtual Connect local accounts using CLI, which access privileges can be assigned? (Select three.)

- A. Domain
- B. Server
- C. User
- D. Storage
- E. Administrator
- F. Operator

**Answer: ABD**

8. On what can Insight Control 6x Central Management Server (CMS) be installed? (Select two.)

- A. Citrix XenServer 4.5 using Windows 2003 Standard SP2 virtual machine
- B. Citrix XenServer 5.5 using Windows 2008 Standard R2 virtual machine
- C. VMware ESX 3.5 Update 4 using Windows 2003 Standard SP2 virtual machine
- D. Microsoft Hyper-V Server 2008 R2 using Windows 2008 R2 Enterprise 32-bit virtual machine
- E. VMware ESX 4 using Windows 2003 Enterprise SP1 virtual machine
- F. Microsoft Server 2008 R2 with Hyper-V using Windows 2003 Enterprise SP2 32-bit virtual machine

**Answer: CF**

9. Which method is recommended when deploying a Windows 2008 operating system on an Integrity Server Blade?

- A. Use make\_net\_recovery
- B. Use HP Insight Rapid Deployment software
- C. Use third-party imaging tools
- D. Use EFI management options

**Answer: B**

10. When designing a BladeSystem hardware solution in order to prevent system failures, which questions should you ask? (Select two.)

- A. How much money or productivity is lost per minute of downtime?
- B. What administrative efforts are required to fix problems?
- C. When was the last failure?
- D. What is the duration of the backup window?
- E. What is the disk I/O throughput?

**Answer: AB**

11. Detecting a clustered host failure is accomplished by monitoring the heartbeats sent between the hosts. You plan to test the heartbeat connection to cause a failover. Which networks are used in VMware for the heartbeats? (Select two.)

- A. On ESX hosts, a VMkernel network is used.
- B. On ESXi hosts, a VMkernel network is used.

- C. On ESX hosts, the service console network is used.
- D. On ESXi hosts, the service console network is used.

**Answer: BC**

12. What are valid HP SIM report formats? (Select two.)

- A. XML
- B. RPT
- C. RTF
- D. CSV
- E. DOC

**Answer: AD**

13. You want to restart the Virtual Connect Manager after changes are made. Which CLI command should you use to accomplish this?

- A. reipl vcm
- B. reload vcm
- C. reboot vcm
- D. reset vcm

**Answer: D**

14. A customer's c7000 enclosure has 10 fans installed. The fan in bay 2 fails. There are no blades that are powered on in device bays 5 through 8 or in device bays 13 through 16. Which statements are true in this situation? (Select two.)

- A. The fan subsystem is no longer redundant.
- B. The fan subsystem is still redundant.
- C. The blade in device bay 2 powers down.
- D. The failed fan is marked failed.
- E. The failed fan is marked as degraded.
- F. The blade in device bay 1 powers down.

**Answer: BD**

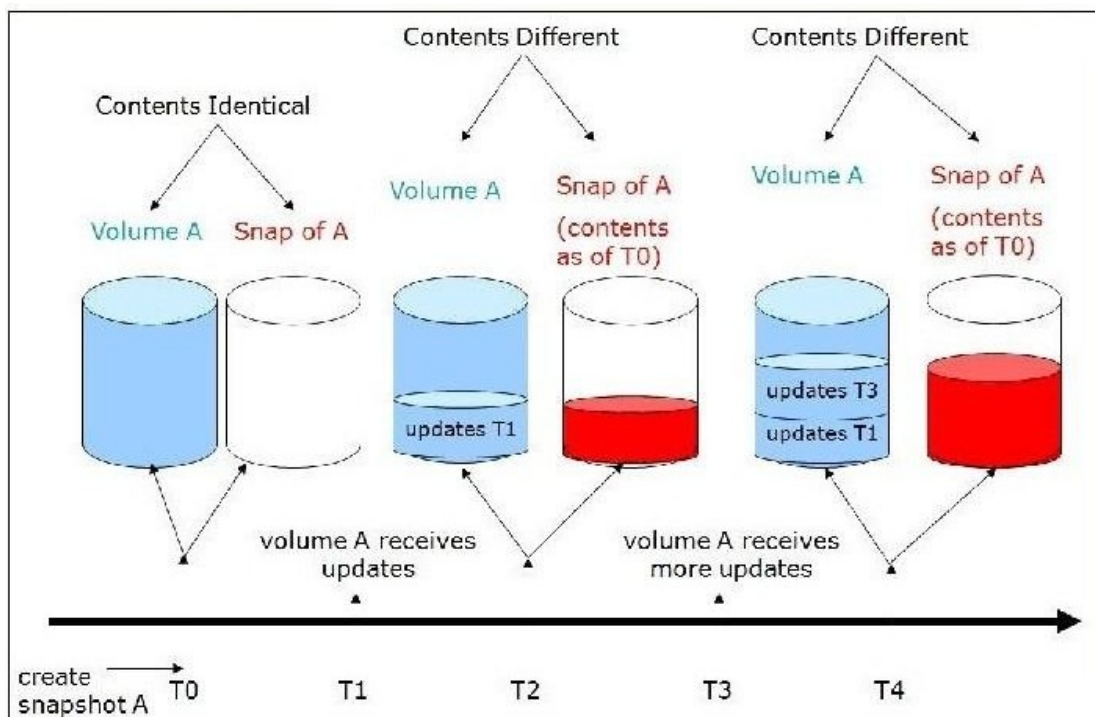
15. The customer has an environment of multiple web servers and two database servers all running on Microsoft Windows 2003 R2 Enterprise Edition. The requirement is to provide high availability for data and efficient access to the web farm. Which solution meets the needs of this customer?

- A. A Network Load Balancing (NLB) environment for both the web servers and database servers
- B. A Network Load Balancing (NLB) environment for the web servers and a quorum disk model server cluster to provide high availability for the database servers
- C. A rotating standby cluster to support the web farm and a quorum disk model server cluster to provide high availability for the database servers
- D. A Network Load Balancing (NLB) environment for the web servers and a Majority Node Set (MNS) server cluster to provide high availability for the database servers

**Answer: B**

16. Which HP Enterprise Virtual Array snapshot concept is shown in the exhibit?

Exhibit:



- A. Snapclone
- B. Demand-allocated snapshot
- C. Mirrorclone
- D. Fully-allocated snapshot

**Answer: D**

17. What is the recommended resource to determine the power and cooling requirements of your configuration?

- A. HP BladeSystem Power Sizer
- B. HP ProLiant Cooling Advisor
- C. HP Thermal Logic
- D. HP BladeSystem Spreadsheet

**Answer: A**

18. Which statement is correct regarding the subnet manager when designing an HP BladeSystem solution using InfiniBand in a Windows environment?

- A. A subnet manager has to be installed on a Linux host.
- B. A subnet manager is automatically installed on the first InfiniBand module.
- C. A subnet manager can run host-based and switch-based.
- D. A subnet manager is optional.

**Answer: C**

19. Which HP resource can help to plan and verify a consolidated storage infrastructure in combination with an HP BladeSystem solution?

- A. HP Replication Systems Manager

- B. HP Storage Sizing Tool
- C. HP SAN Design Reference Guide
- D. HP SalesBuilder for Windows

**Answer: C**

20. The customer wants to upgrade the memory in an existing BL460 G6. Using the HP DDR3 Memory Configuration Tool, what is the easiest way to examine the existing memory configuration?

- A. Use Insight Diagnostics on the involved blade.
- B. Use memconfig and upload that information.
- C. Use the HP System Management Homepage.
- D. Upload the diag.log to the Memory Config Tool.

**Answer: A**